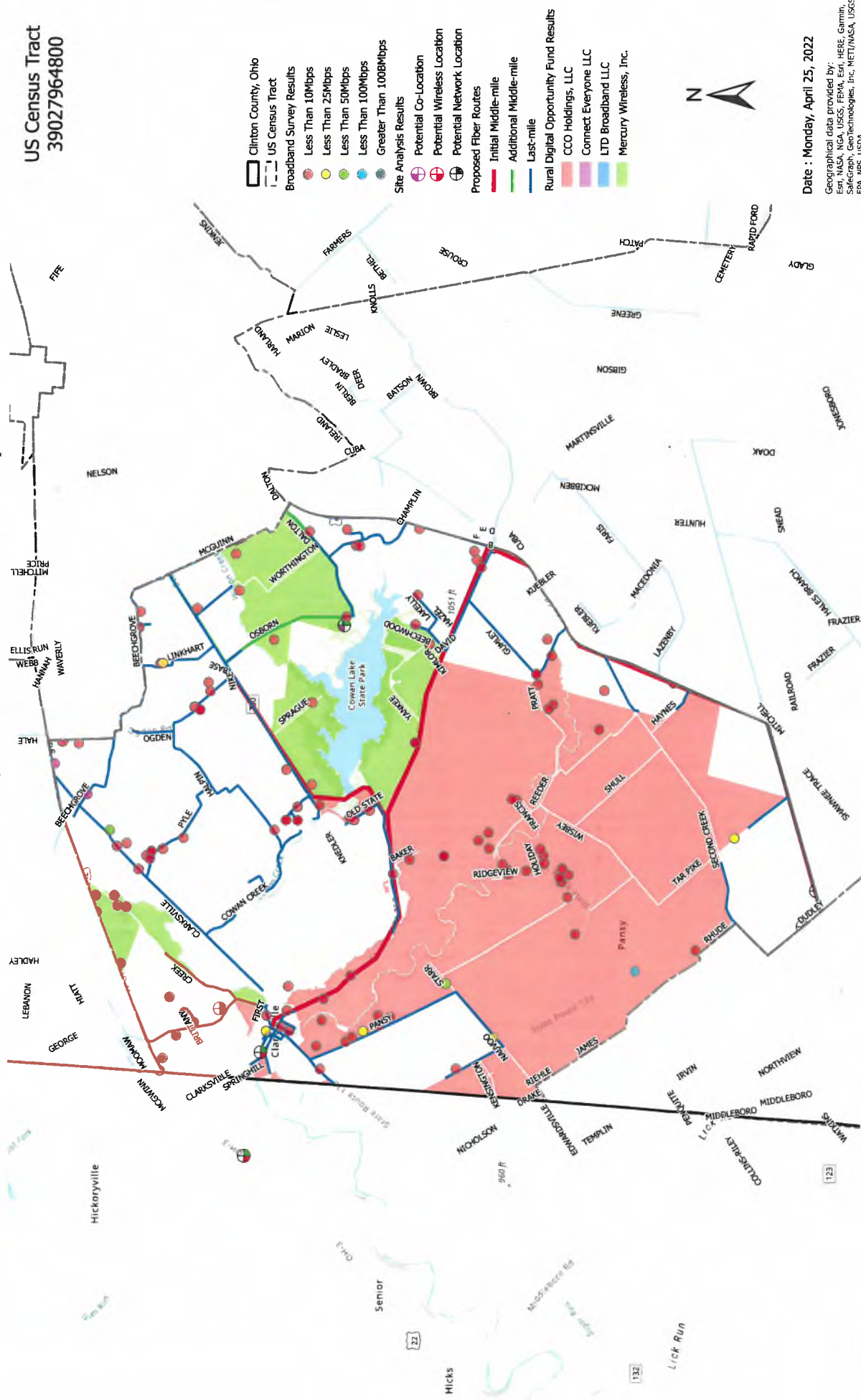


EXHIBIT A
AREAS OF MOST NEED
RANKED

Ranked 1st

US Census Tract
39027964800

Date : Monday, April 25, 2022

Geographical data provided by:
Esri, NASA, NGA, USGS, FEMA, Esri, HERE, Garmin,
SafeGraph, GeoTechnologies, Inc, METI/NASA, USGS,
EPA, NPS, USDA

Ranked 2nd

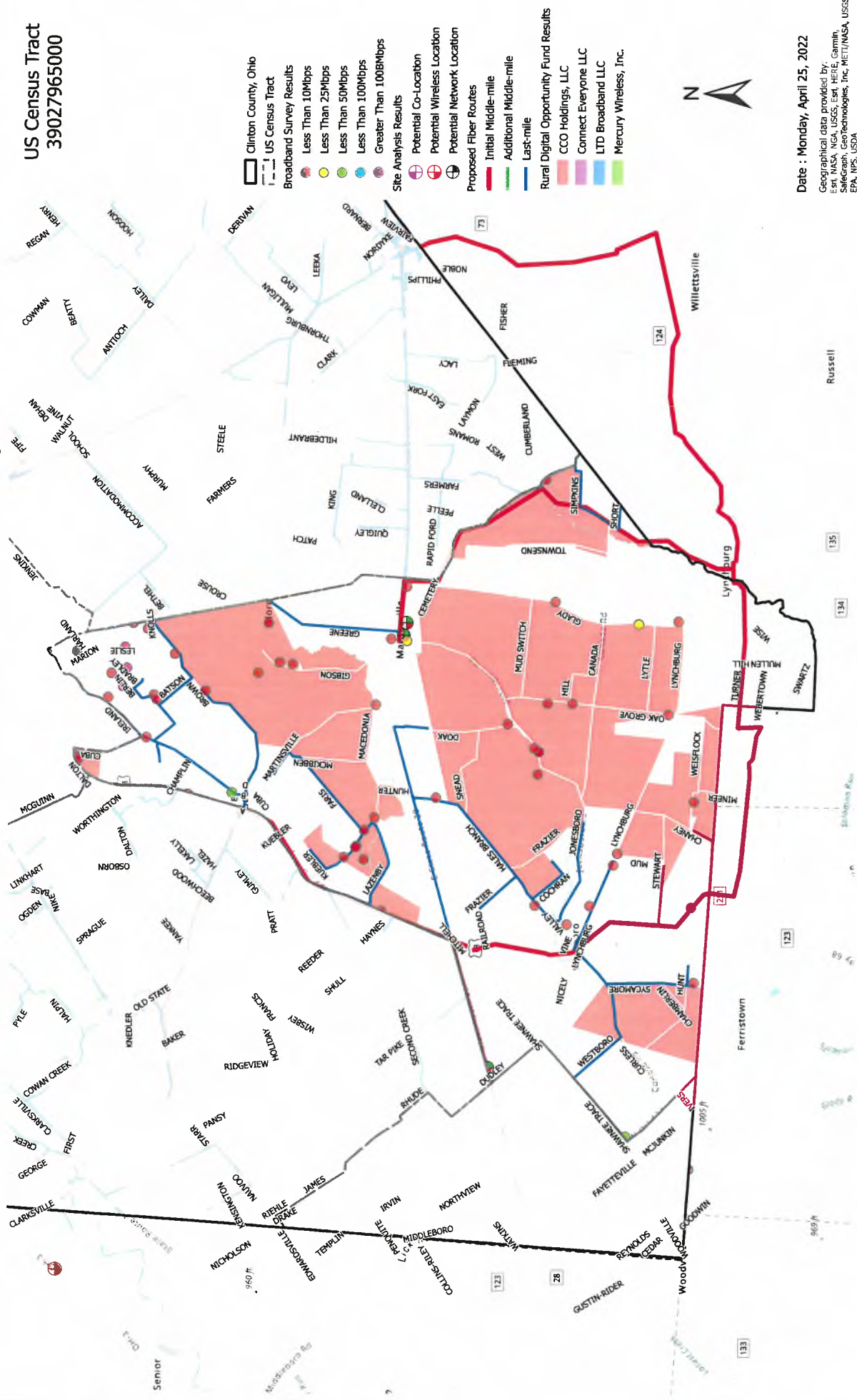
US Census Tract
39027965100

Date : Monday, April 25, 2022

Geographical data provided by:
EsrI, NASA, NGA, USGS, Esri, HERE, Garmin,
Mapbox, Swire, GeoTechnologies, Inc, METI/NASA, USGS,
EPA, NPS, USDA

Ranked 3rd

US Census Tract
39027965000



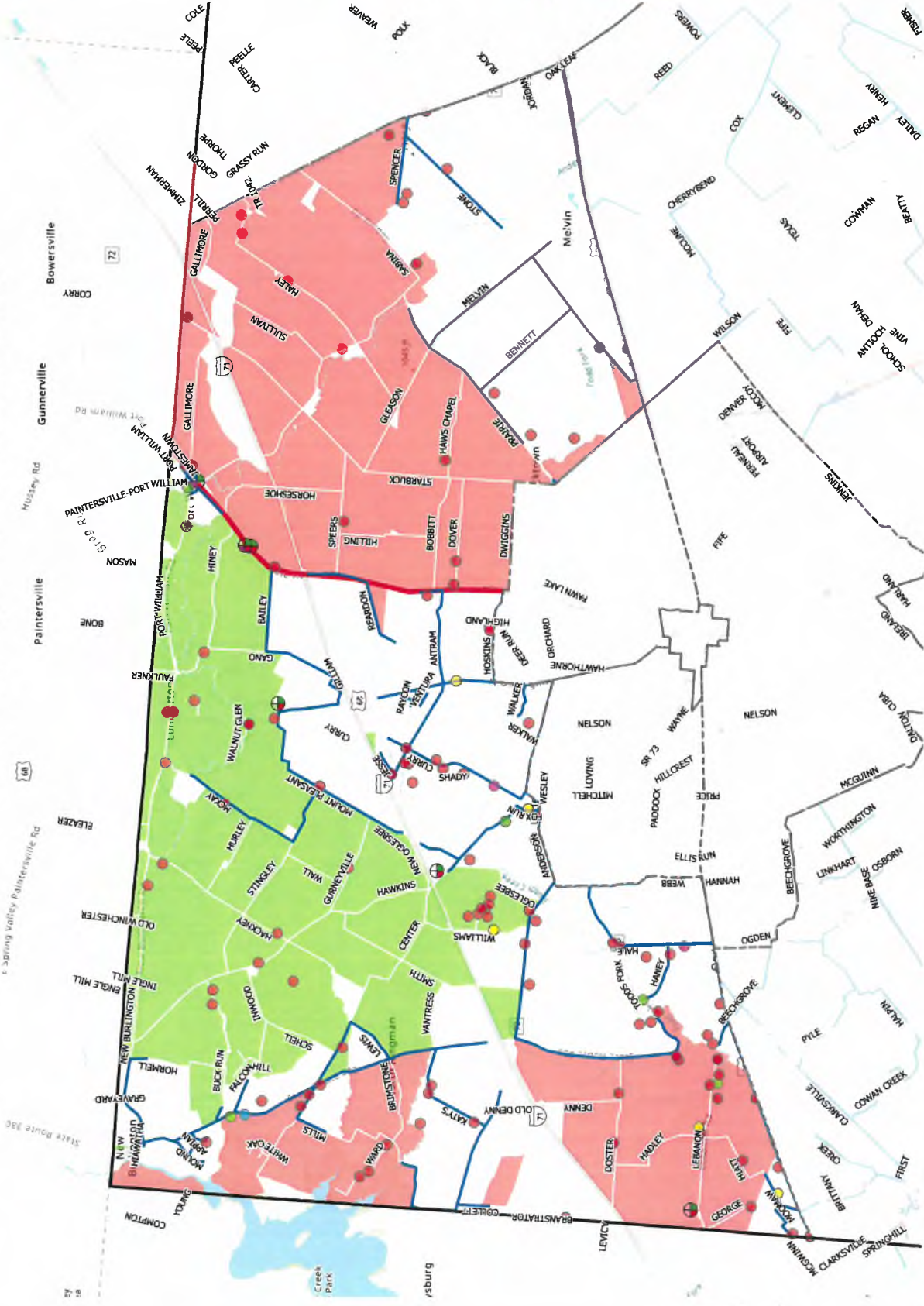
Date : Monday, April 25, 2022

Geographical data provided by:
Esri, NASA, NGA, USGS, Esri, HERE, Garmin,
SafeGraph, GeoTechnologies, Inc, METI/NASA, USGS,
EPA, NPS, USDA

Clinton County, Ohio - Broadband Study

Ranked 4th

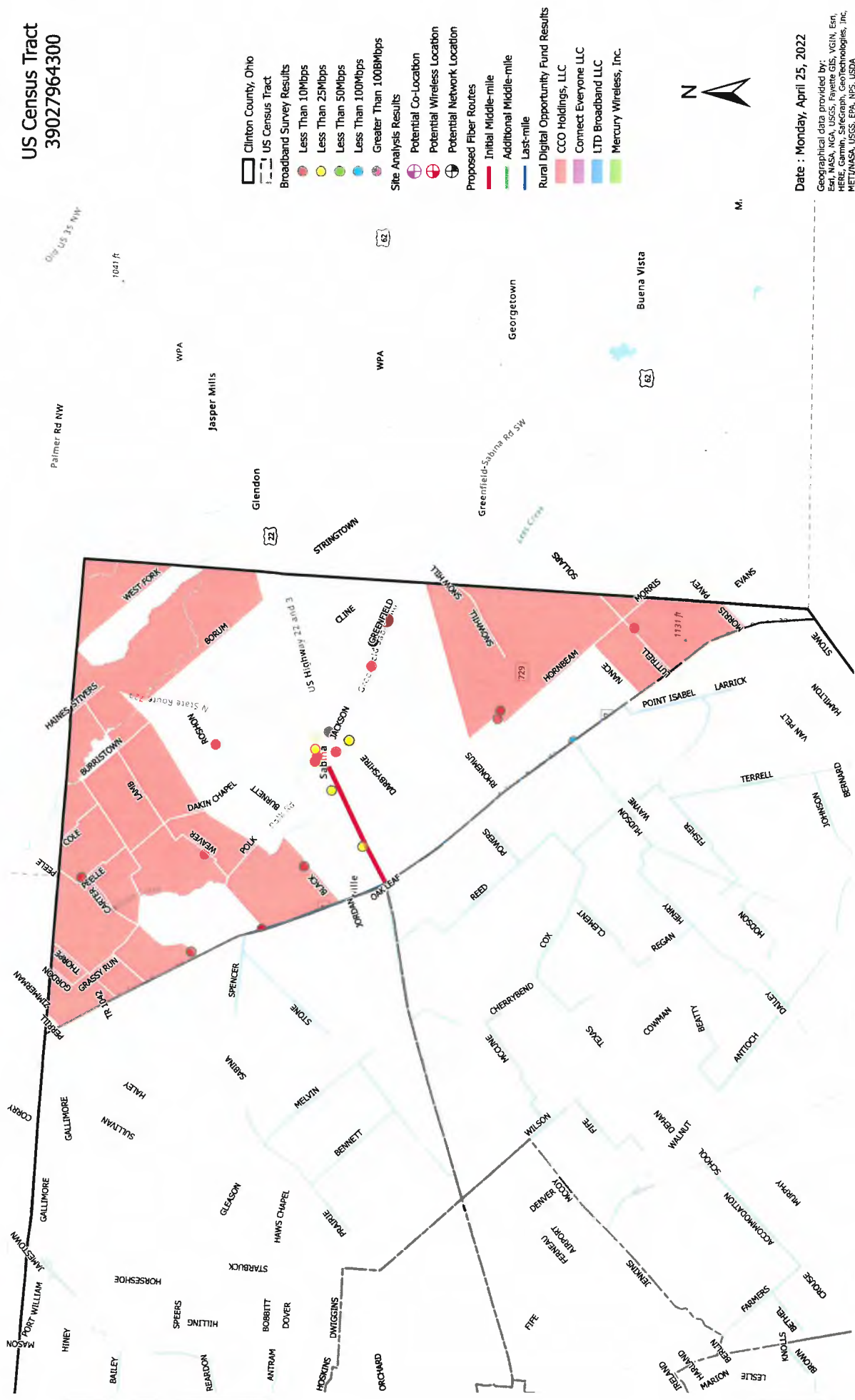
US Census Tract
39027964400



Date : Monday April 25, 2022

Ranked 5th

US Census Tract
39027964300



Date : Monday, April 25, 2022

Geographical data provided by:
Esri, NASA, NGA, USGS, Fayette GIS, VGIN, Esri,
HERE, Garmin, SafeGraph, GeoTechnologies, Inc.,
METI/NASA, USGS, EPA, NPS, USDA

Clinton County, Ohio - Broadband Study

Ranked 6th

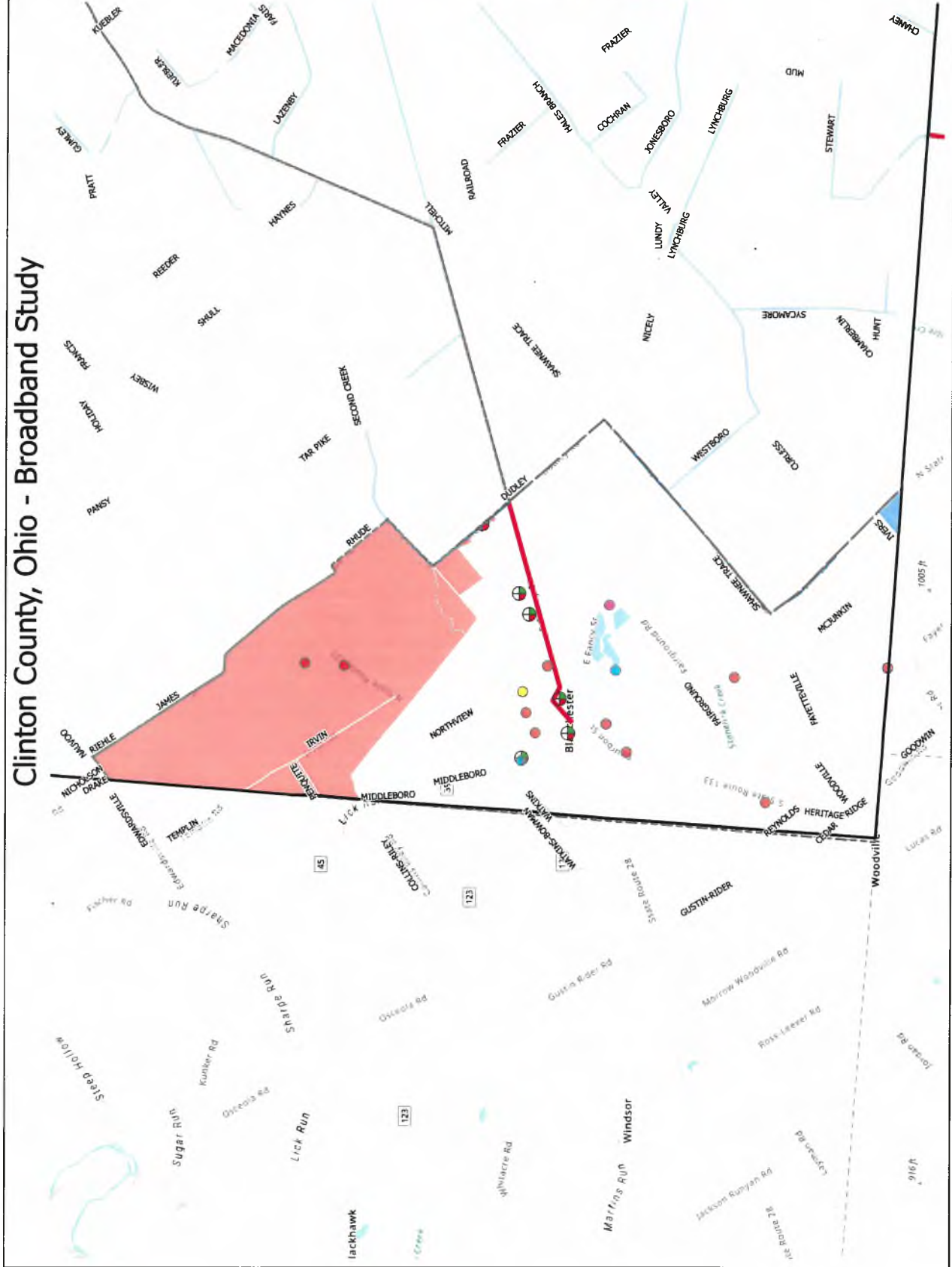
US Census Tract
39027964900

- Clinton County, Ohio
- US Census Tract
- Broadband Survey Results
 - Less Than 10Mbps
 - Less Than 25Mbps
 - Less Than 50Mbps
 - Less Than 100Mbps
 - Greater Than 100Mbps
- Site Analysis Results
 - Potential Co-Location
 - Potential Wireless Location
 - Potential Network Location
- Proposed Fiber Routes
 - Initial Middle-mile
 - Additional Middle-mile
 - Last-mile
- Rural Digital Opportunity Fund Results
 - CCO Holdings, LLC
 - Connect Everyone LLC
 - LTD Broadband LLC
 - Mercury Wireless, Inc.



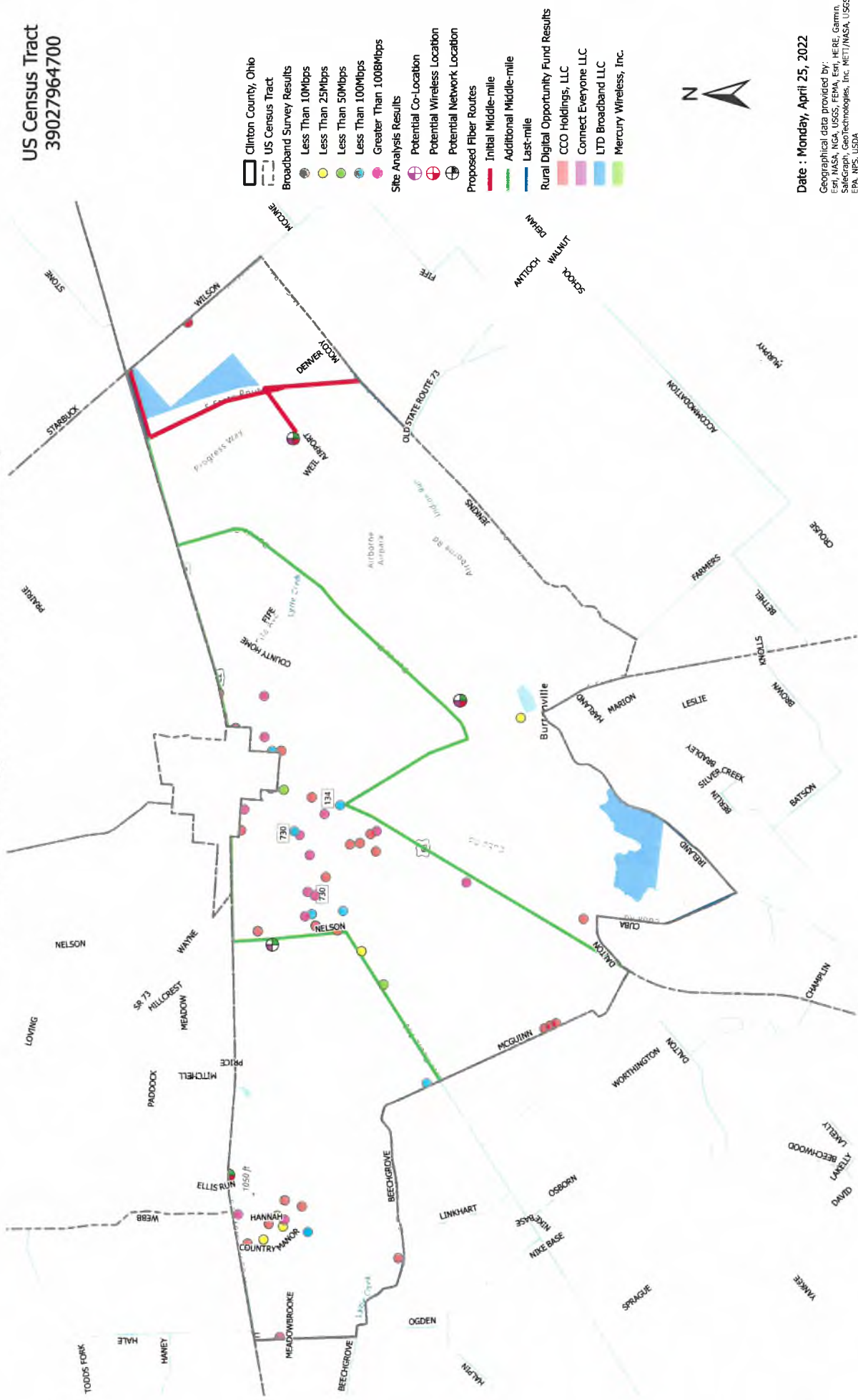
Date : Monday, April 25, 2022

Geographical data provided by:
Esri, DeLorme, USGS, Esri, HERE, Garmin,
Swatch, Swatch, Swatch, Swatch, Swatch,
EPA, NPS, USDA



Ranked 7th

US Census Tract
39027964700



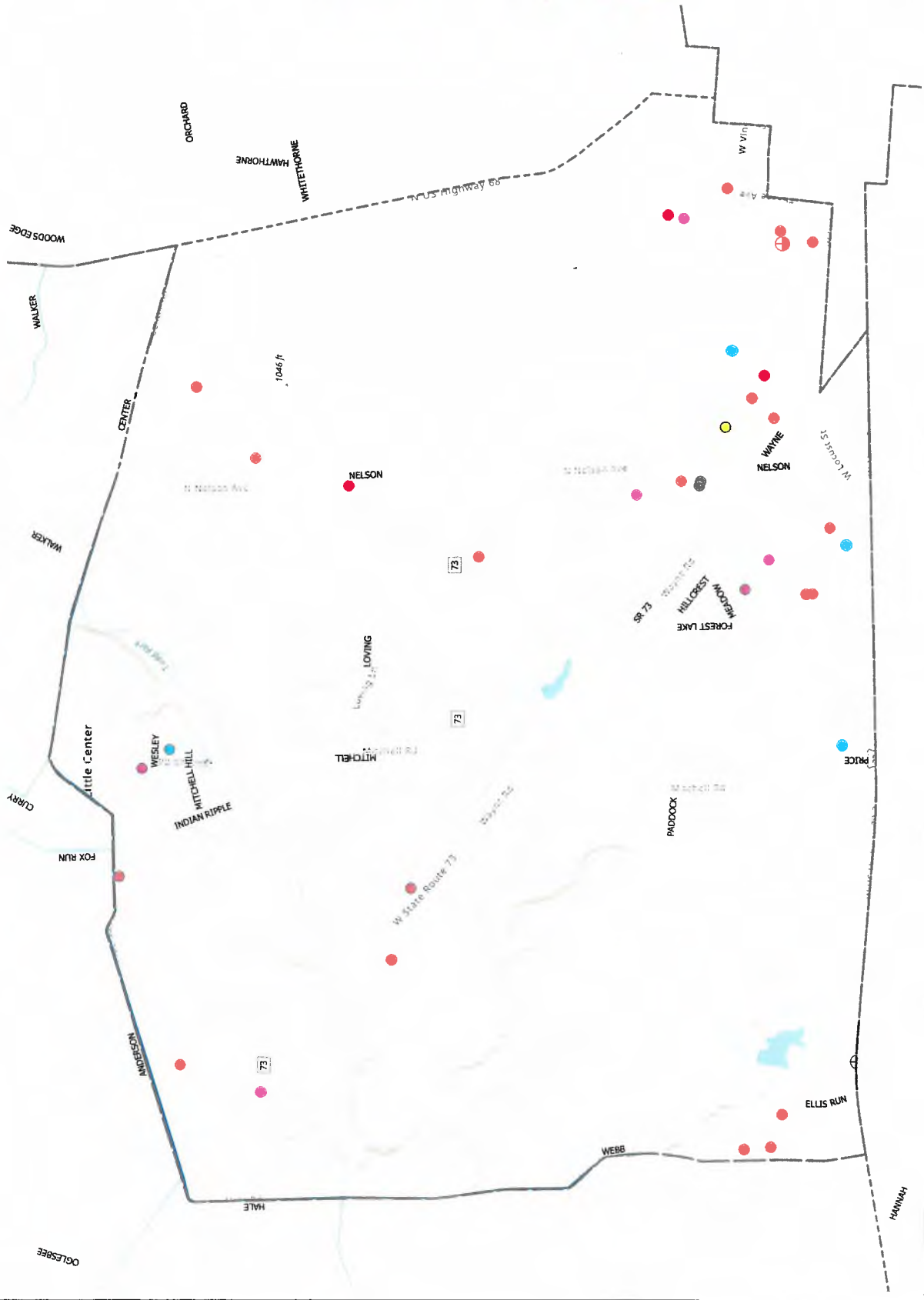
Date : Monday, April 25, 2022

Geographical data provided by:
Erti, NASA, NGA, USGS, FEMA, Erti, HERE, Garmin,
SafeGraph, GeoTechnologies, Inc, METI/NASA, USGS,
EPA, NPS, USDA

Clinton County, Ohio - Broadband Study

Ranked 8th

US Census Tract
39027964501



- Clinton County, Ohio
- US Census Tract
- Broadband Survey Results
 - Less Than 10Mbps
 - Less Than 25Mbps
 - Less Than 50Mbps
 - Less Than 100Mbps
 - Greater Than 100Mbps
- Site Analysis Results
 - Potential Co-Location
 - Potential Wireless Location
 - Potential Network Location
- Proposed Fiber Routes
 - Initial Middle-mile
 - Additional Middle-mile
 - Last-mile
- Rural Digital Opportunity Fund Results
 - CCO Holdings, LLC
 - Connect Everyone LLC
 - LTD Broadband LLC
 - Mercury Wireless, Inc.



Date : Monday, April 25, 2022

Geographical data provided by:
 NOAA, NOAA USGS, FEMA, Esri, HERE, Garmin,
 Spatialytics, DeLorme, StreetView, Mapbox, OpenStreetMap, USGS,
 EPA, NPS, US Census Bureau, USDA

Clinton County, Ohio - Broadband Study

Ranked 10th

US Census Tract
39027964600



Date : Monday, April 25, 2022

Geographical data provided by:
Esri Community Maps Contributors, Esri, HERE,
DeLorme, Garmin, GeoEye, GeoTechnology, Inc., METU,
NASA, USGS, EPA, NPS, US Census Bureau, USDA.